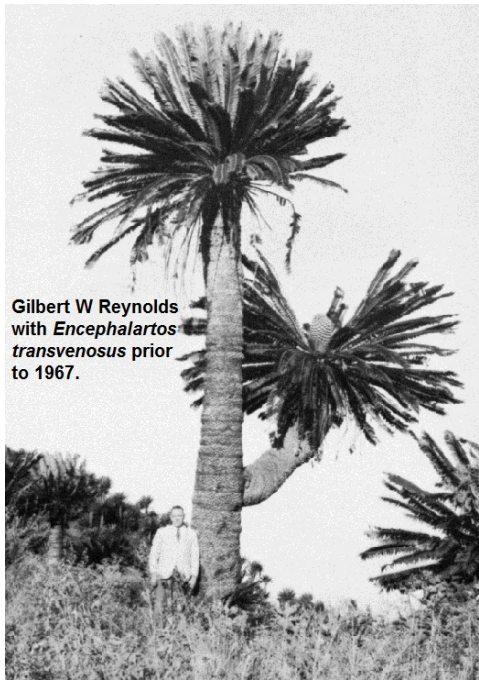


GILBERT REYNOLDS IMAGES



Gilbert W Reynolds
9/29/51

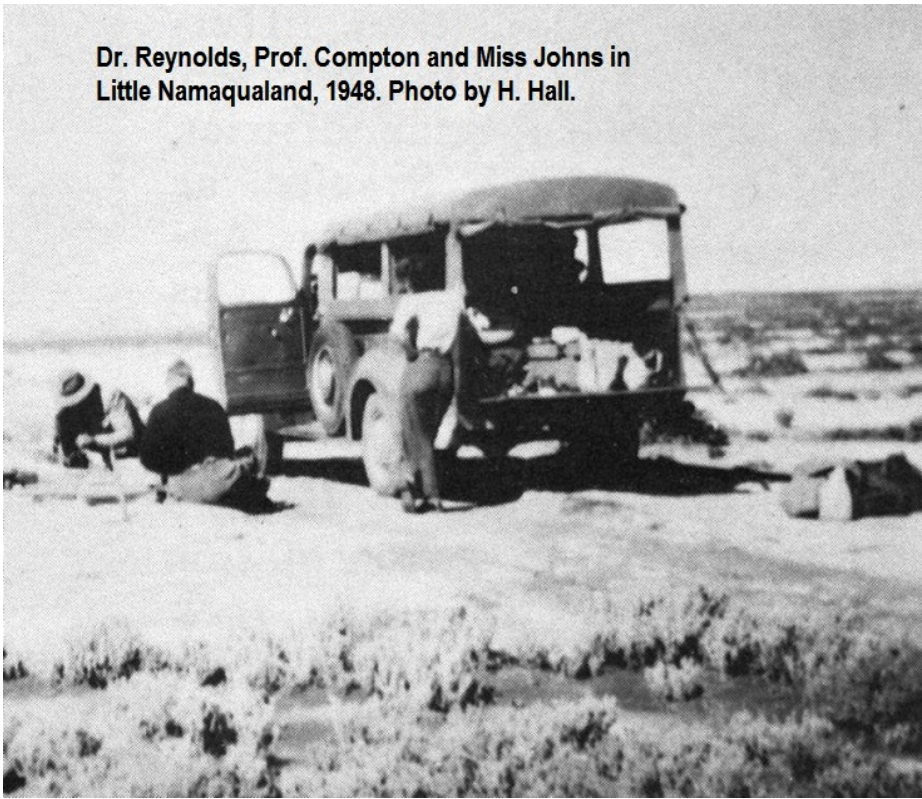


Gilbert W Reynolds
with *Encephalartos
transvenosus* prior
to 1967.

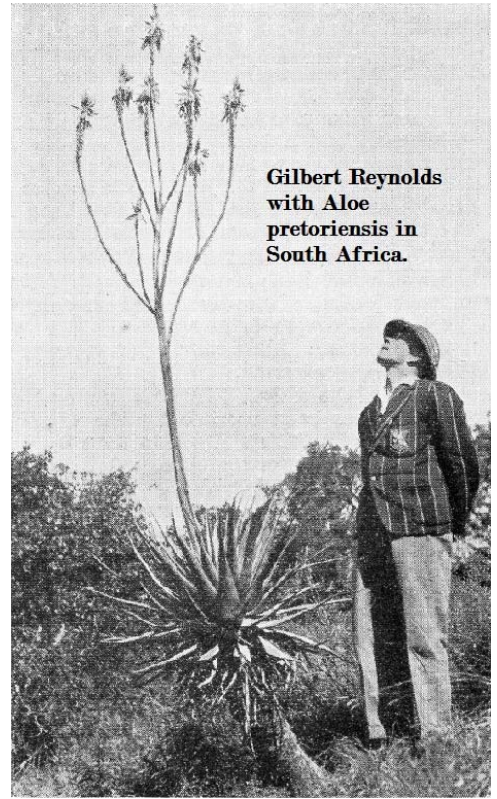


Gilbert Reynolds, David Hardy and Hennie Naude in Swaziland in 1960. Photo by Werner Rauh

Dr. Reynolds, Prof. Compton and Miss Johns in Little Namaqualand, 1948. Photo by H. Hall.



Gilbert Reynolds with *Aloe pretoriensis* in South Africa.



Inez Clare Verdoorn & Gilbert Westacott Reynolds and *Aloe vryheidensis* near Louwsberg east of Vryheid, KwaZulu-Natal, South Africa in 1936.

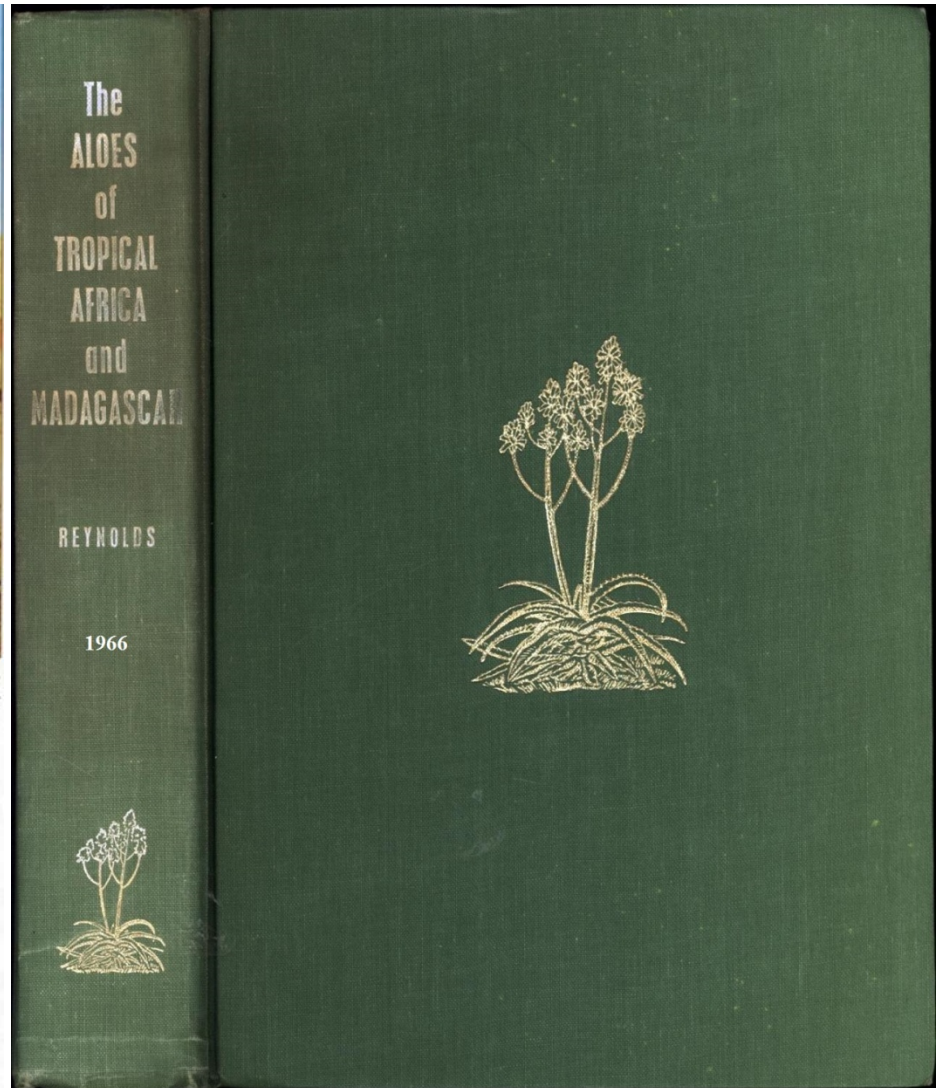




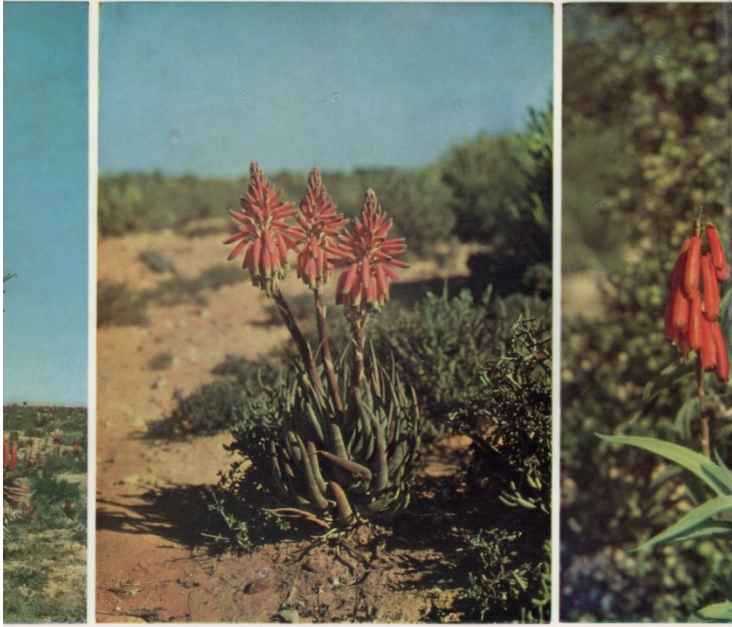
Gilbert Westcott Reynolds & Inez Clare Verdoorn crossing the Pongola river on a pond in South Africa 1936. Photo by Robert Allen Dyer.



Figure 4. Gilbert Westcott Reynolds inspecting *Aloe macroclada* in the Iandratsay Valley, 30 km W. of Antsirabe, Madagascar (from Reynolds, 1958c.). This photo is not credited, but in his Madagascan travelogue Reynolds (1955e) wrote: "Dr Paulian placed a Land Rover with driver at my disposal, and spared no pains to make the expedition a success. Mr. B.M. Descoings, the Institute's botanist accompanied me, and together we were to travel over 4,000 miles throughout the Island in seven weeks of hard going". It therefore seems most likely that the photographer here was Bernard Descoings, a suggestion also supported by John Lavranos (pers. com.). This same photo appeared as plate 101 in Reynolds (1966), again without credit, and a similar photo was published earlier (Reynolds, 1955e: 208).



The
Reynolds' ALOES
of South
Africa



A new edition of G. W. Reynolds' classic work — complete, definitive

650 illustrations (31 in full colour)

Published for the "The Aloes of South Africa" Book Fund

A. A. BALKEMA

G. W. REYNOLDS

LES ALOES
DE
MADAGASCAR

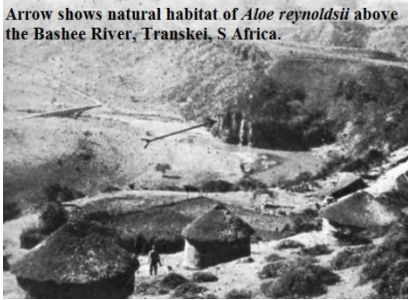


LE NATURALISTE MALGACHE
TOME X — VOLUME HORS-SÉRIE

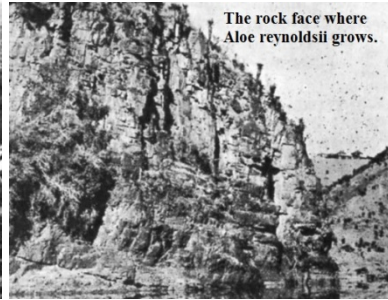
INSTITUT DE RECHERCHE SCIENTIFIQUE
DE MADAGASCAR
TANANARIVE - TSIMBAZAZA

1958

Arrow shows natural habitat of *Aloe reynoldsii* above the Bashee River, Transkei, S. Africa.

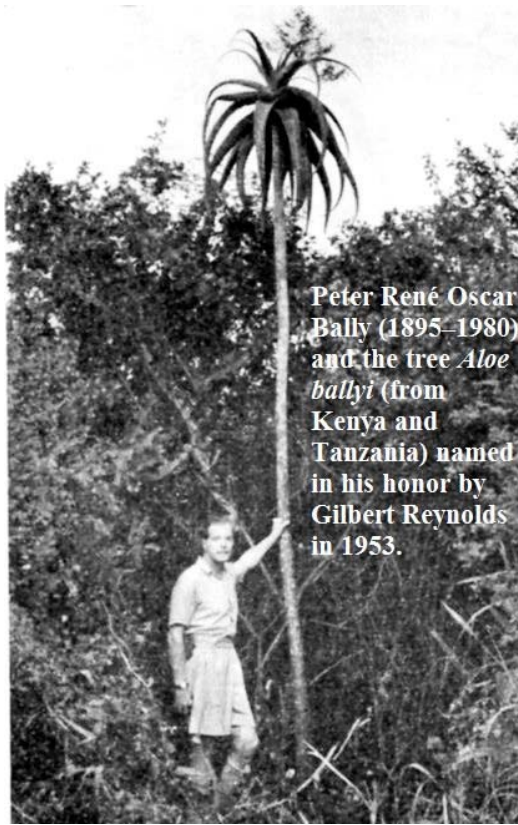


The rock face where *Aloe reynoldsii* grows.



On sheer rock face where *Aloe reynoldsii* grows.





Peter René Oscar Bally (1895–1980) and the tree *Aloe ballyi* (from Kenya and Tanzania) named in his honor by Gilbert Reynolds in 1953.



Gilbert Westacott Reynolds

"Copyrighted material on this site is used in accordance with 'Fair Use', for the purpose of providing dedicated cactus and other succulent plant personalities, and will be removed at the request of copyright owner(s). As a non-profit, non-revenue producing site, the CSSA Archives provides its content as a free, educational and informative service for its readers. Copyrighted content on this site may not be further used for profitable purposes without the expressed written permission and consent of the copyright owner(s)."